

BATTERY BACKUP SYSTEM BBS2 FOR POL LED OBSTRUCTION LIGHTS

Compliances: ETL Listed POL to UL 1598A Marine Vessels at -40 deg C to +55 deg C
 ETL Listed POL to CSA C22.2 No. 137-M1981 & No. 250.0-08 Canada
 ETL Verified FAA L-810 to FAA AC 150/5345-43J at -55 deg C to +55 deg C
 Registered ISO 9001: 2015
 Compliance to ICAO Annex 14 Low Intensity Types A (10 cd) & B (32 cd)

The Battery Backup System (BBS) consists of one or more POL-21007, 21006 or 21005 red LED aviation obstruction lights and the BBS battery & control unit. The PPC-40003 photoelectric controller provides automatic activation at dusk in accordance with FAA specifications.

The BBS is connected to normal AC commercial power. Upon loss of the AC power, the BBS switches to battery power for up to one night of unattended operation. The battery stays fully charged automatically under normal AC power. The battery is not depleted during normal AC power as the BBS uses an inverter. The BBS operating time is based on the number of operating 12V DC heads.

Select the 12V DC obstruction light & quantity:

POL-21007 Series	See file OL188POLv7	For basic singles & doubles
POL-21005 Series	See file OL190POLv5	For ICAO with all options
POL-21006 Series	See file OL191POLv6	For FAA L-810



Select the BBS unit & FAA photoelectric control:

BBS-60502-AC	90-264V AC Battery Backup & Control Unit *
BBS-60502-6	277V AC Battery Backup & Control Unit *
PPC-40003-34T	DC FAA Photoelectric Control *

* The BBS accepts the available AC power. The PPC is required.

POL-21007-5B-R-34B-S
Emits red when ON



POL-21006-3F-R-34B-D2
One operating head



POL-21006-3F-R-34B-S2
One operating heads



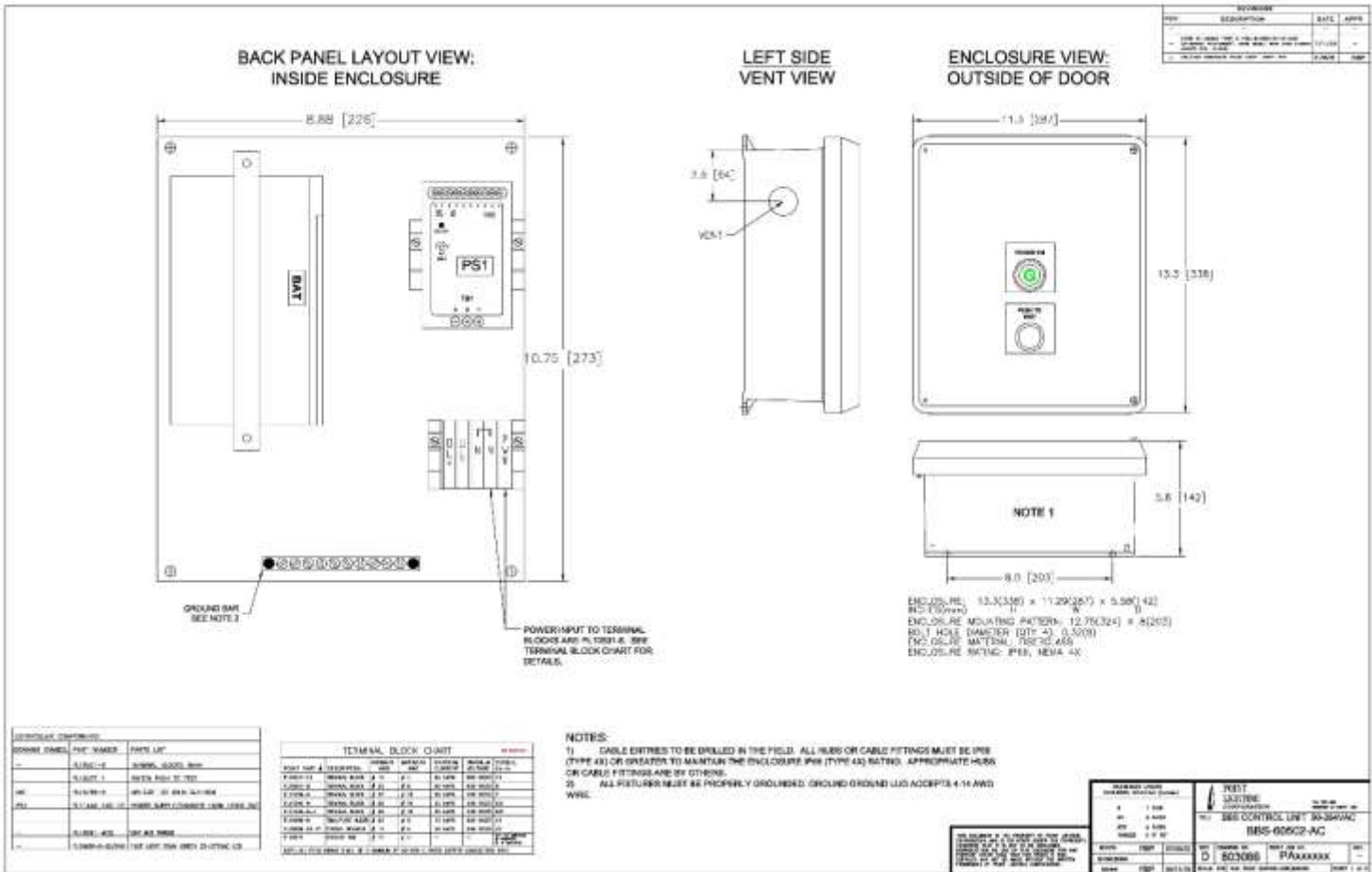
Number of Lights	Approximate
POL-21007	Operating Time
POL-21005	
1 to 3	All Night
4 to 7	> 6 hours
7 to 9	> 4 hours

Number of Lights	Approximate
POL-21006	Operating Time
1	14 hours
2	7.4 hours
4	3.5 hours
8	1.4 hours

Minimum Wire Size Chart

21007 & 21005 Circuit Run Length	Number of Operating Heads								
	1	2	3	4	5	6	7	8	9
100-ft wire size AWG:	16	16	16	16	14	14	14	14	12
200-ft wire size AWG:	16	16	14	14	12	12	10	10	10
21006 Circuit Run Length	Number of Operating Heads								
	1	2	3	4	5	6	7	8	9
100-ft wire size AWG:	16	14	12	12	10	10	10	8	8
200-ft wire size AWG:	14	12	10	8	8	6	6	4	4

TYPICAL WIRING DIAGRAM OF BBS2 CONTROL UNIT



POINT LIGHTING CORPORATION

Mail: P.O. Box 686, Simsbury, CT 06070
Tel 860.243.0600

Plant: 61-65 West Dudley Town Rd, Bloomfield, CT
USA Fax 860.243.0665

email: Info@PointLighting.com

website: www.PointLighting.com