




POINT SURFACE FLOODLIGHT PSF-AX MARINE HELIDECK FLOODLIGHT ATEX ZONES 1 & 2 IECEx

Compliances: IECEx Listed Ex d IIB T6 Gb Ta -55 to +55-deg C IP66
 ATEX Listed  II 2 G Ex d IIB T6 Gb Ta -55 to +55-deg C IP66
 Registered ISO 9001:2008
 ICAO Annex 14, Volume II
 UK CAA CAP 437, Chapter 3, paragraph 3.5
 American Bureau of Shipping (ABS) Type Approved Product
 ABS Green Passport per MEPC179 (59)
 International Maritime Organization (IMO) MODU Code 2001, para 13.5



The PSF-53017-AX is a zones 1 & 2 medium intensity LED surface mounted helipad and helideck floodlight intended to "wash" the pad with light. The purpose of the PSF-AX is to provide cones of light "washing" the surface that provides improved conspicuity and depth perception to the pilot.

Point Type	Voltage	AX	Rear Entries (2)
PSF-53017	1: 120 volts 2: 220-240 volts 3: 12 volts DC 4: 24 volts DC	AX: ATEX & IECEx Zone 1 Zone 2	(blank): 3/4-inch NPT 10: 1-inch NPT M20: Metric M25: Metric SNP: Safety Net Plate [^]



Marine Treatment of the cover and black anodizing of the body are included: *The fixture shall be treated for marine conditions by cleaning per US Department of Defense TT-C-490 method III, pretreated with chrome-free aluminum conversion coating per US MIL-C-5541 type II, epoxy powder base coat primer and glossy polyester powder coat finish in color RAL 6003 (FED-STD-595 color #14097) dark green. Powder coating per US Department of Defense MIL-PRF-24712A type VI and oven cured.*

[^] Includes SS mounting hardware for PSF only.

Listed: Baseefa14ATEX0274
IECEx BAS 14.0130

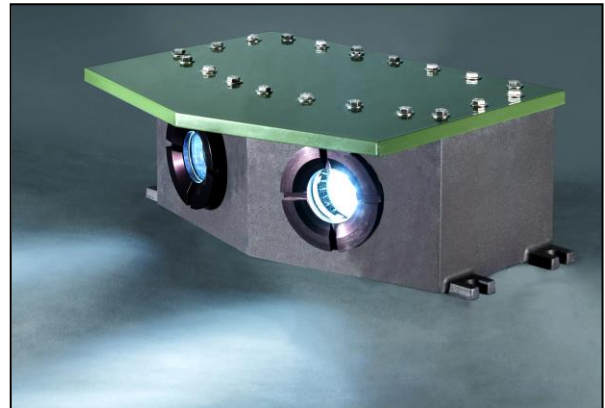
Peak (per beam): 4,000 candelas
 Total output per fixture: 8,000 candelas
 LED rated average life: 100,000 hours

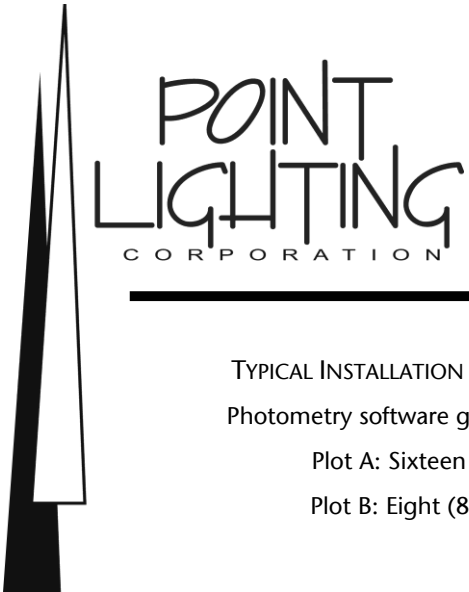
T-number: T6 (85 deg C)
 T ambient: +55 deg C
 Operating: -55 deg C to +55 deg C
 Frequency: 50/60 Hz
 Ingress Rating: IP66

All external hardware is grade 316 (A4) stainless steel.
 Metal castings are copper-free (< 0.2%) heat treated aluminum.

Note: Cover hardware tool PL10839-PSFAX is required for all new installations.

PSF-53017-2-AX





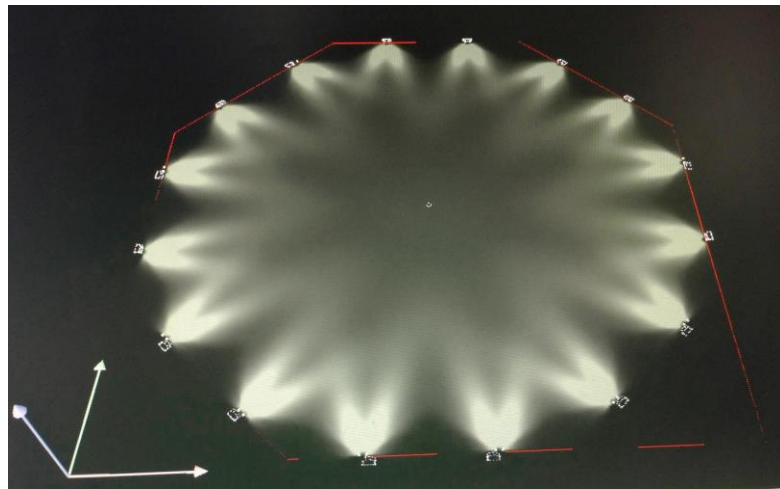
POINT SURFACE FLOODLIGHT PSF-AX MARINE HELIDECK FLOODLIGHT ATEX ZONES 1 & 2 IECEx

TYPICAL INSTALLATION PHOTOMETRY PLOTS FOR A 22 D-VALUE OCTAGONAL HELIDECK
Photometry software generated plots the average across the surface of the octagon

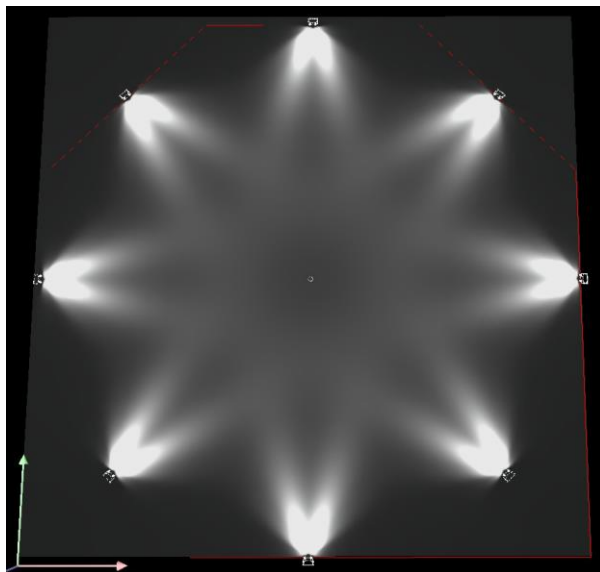
Plot A: Sixteen (16) PSF Surface Floodlights produces 31 lux average

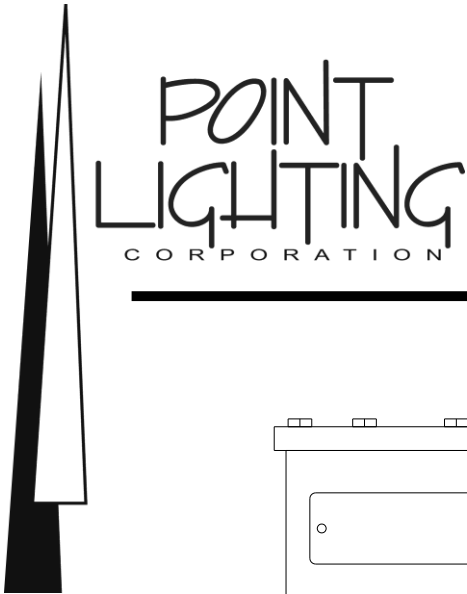
Plot B: Eight (8) PSF Surface Floodlights produces 11.76 lux average

PLOT A



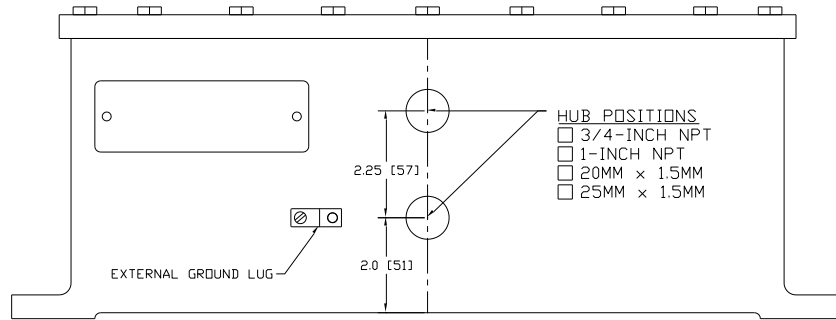
PLOT B





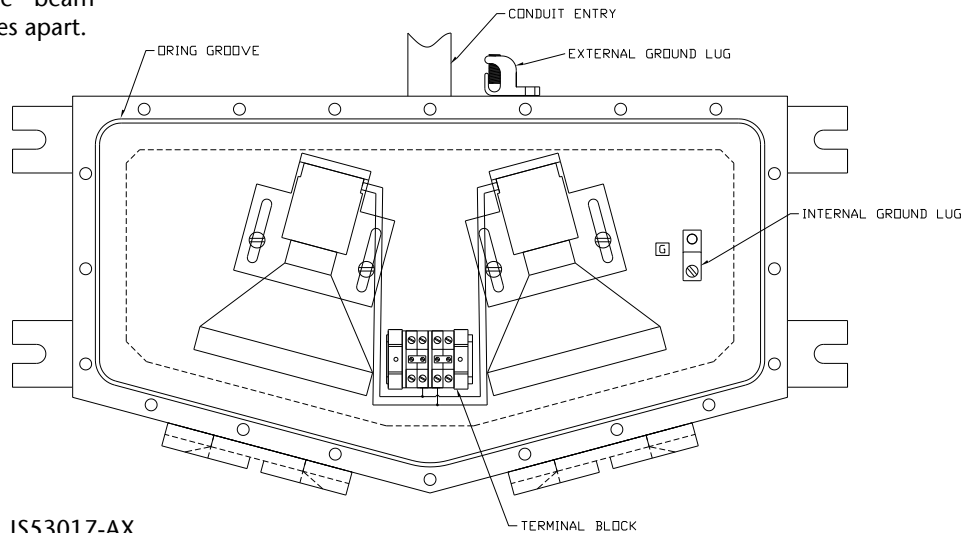
POINT SURFACE FLOODLIGHT PSF-AX MARINE HELIDECK FLOODLIGHT ATEX ZONES 1 & 2 IECEx

PSF-53017-AX Rear View



The two (2) flood lamps are positioned with the beam centerlines 30-degrees apart.

PSF-53017-AX Top View



Instruction Sheet: IS53017-AX

Weight: 48 lbs 22 kg
 Dimensions: 12.0 D 15.5 W 6.6 H
 (305) (394) (167)
 Bolt Pattern: Four (4) holes for 3/8-16 screws
 Arranged on flanges spaced
 4.5 x 16.5-inches
 Important Notes: * Required for new installations
 ** No substitute by certification
 Quantity 20 per fixture

Replacement Parts

PL11003-1 Lamp LED 120v, 12.5 watts
 PL11003-2 Lamp LED 230v, 9.5 watts
 PL11056-3 Lamp LED 12/24v DC, 9 watts
 PL10737-1 Socket & Bracket AC Assembly (2)
 PL10737-1-DC Socket & Bracket DC Assembly (2)
 PL 11107-25 ** Cover Bolts 316SS (20)
 PL10235-14-SS** Washer Flat 316SS (20)
 PL10839-PSFAX* Torque Wrench Kit

POINT LIGHTING CORPORATION

Mail: P.O. Box 686, Simsbury, CT 06070
 Tel 01 860.243.0600
 email: Info@PointLighting.com

USA

Plant: 61-65 W. Dudley Town Rd, Bloomfield, CT
 Fax 01 860.243.0665
 website: www.PointLighting.com